

Taifun[®]

LTB

User Manual

english



IMPORTANT

Please read these instructions carefully,
before using your Taifun® LTB.

Dear shopowner,

Thank you for purchasing a Taifun® Liquid - Test - Bar (LTB).

The company **SmokerStore** has worked long and hard on this unit, so you can offer your customers a hygienical way to test liquids.

The unit is divided into a base unit (similar to a vaping device) and 10 rebuildable atomizers. These are 10 Taifun® GTII atomizers, specially modified for the LTB, similar to the atomizers that you already know.

By pushing on one of the 10 control buttons, the respective atomizer is "activated" and vaporizes the liquid contained in it. A durable, maintenance-free membrane pump inside the base unit accelerates the steam, so that the customers can inhale it without contact to the atomizers.

The excellent taste, the fast and hygienic try out of various liquids will delight your customers.

Please mind the following instructions for handling the device and the possible health risks that may be caused by vaping.

Table of Contents

General information.....	4
Safety instructions	5
Warning.....	6
Important instructions.....	7
Operating conditions of the basic unit.....	8
Operating condition of the atomizers.....	9
Warranty	10
Preparations before first use	11
Starting the Taifun® LTB.....	12
Using of the Taifun® LTB	13
Status display of the Taifun® LTB (during power on) in delivery status	14
Status display and error display of the Taifun® LTB (during use)	15
Further functions of the Taifun® LTB	18
Turn on/off keylock.....	18
Antitheft.....	18
Turn functions of the Taifun® LTB on/off	19
Example A: Switch to red lightning	20
Example B: Turn on lack-of-liquid detection.....	21
Cleaning of the Taifun® LTB (in case of leaking atomizer)	22
Cleaning of the Taifun® LTB (Housing).....	23
Transport of the Taifun® LTB	24
Replacing the fuse of the Taifun® LTB	25
Coil building.....	26
(Re-)filling of the atomizers	27

General information

- The Taifun® LTB is designed exclusively for commercial testing of liquids for e-cigarettes.
- The device contains no fans or other components that require maintenance.
- The Taifun® LTB is designed for installation in an e-cigarette shop. The shop owner has to ensure that the customers use the device properly and are aware of the possible health risks caused by vaping.
- All legal regulations (for example youth protection) has to be considered by the shop owner.
- The manufacturer cannot be held liable for any direct or indirect health damage resulting in use of the device or the use of liquids.
- The manufacturer can not be held liable for any direct or indirect health damage resulting from unintended or inappropriate use or negligence of the user or shop owner.
- It is the responsibility of the shop owner to operate the device with suitable coils and liquids.
- A deep understanding of rebuildable atomizers and operating them with vaping devices is essential for the safe and trouble-free operation of the Taifun® LTB and is presupposed.

Safety instructions

Please read the following safety instructions. The manufacturer is not liable for damages caused by improper operation.

- This device has been tested at the factory according to VDE 0701/0702 (electrical safety testing).
- This test must be repeated each year, to ensure user safety.
- The device is designed for a maximum working time of 12 hours per day.
- Then the device has to be turned off for 12 hours, by using the main switch at the back off the device.
- An unattended operation, for example, during night time is not permitted.

Warning

If you have the feeling that a safe operation is no longer possible, the device must be taken out of service and it must be secured against unintentional power-on!

The feeling is justified if

- the device or the power cord shows visible damage
 - the device contains loose parts (noise from loose parts, for example during transport)
 - the device no longer works as intended
 - if the device has been exposed to unsuitable conditions (rain, longer outdoor storage, etc.)
- ➔ **in doubt contact the manufacturer**
- ➔ **do not open the device by yourself**

There are no components inside for maintenance. By opening the device, you will lose your warranty.

Important instructions

- The device is not suitable for children or people with restricted comprehension. Keep the unit away from these persons. This device is not a toy.
- The coils of the atomizers develop very high temperatures (glowing). Only use the device with working atomizers. Fire and burn hazard.
- Do not use in areas, which could be enriched with flammable gases, vapors or dusts. Risk of explosion!
- Never expose the device to rain, moisture or humidity.
- Do not expose the device to direct sunlight or radiation from other sources of heat.
- Do not connect the device to additional or external voltages.
- This device is not a medical product!
- For all damages to persons and property which occur from inappropriate use, the liability is only subject to the operator.

Operating conditions of the basic unit

- Power 230V / 50 Hz (no inverter), protection class II.
- Power consumption 55 watts. Primary fuse 250 mA slow. The fuse must be changed at the power connector
- Cyclic duration 50% (e.g. 12 hours of operation per day and 12 hours off during the night).
- Environment temperature range + 5 ° to + 30 ° C non-condensing.
- Storage temperature range 0 ° to + 50 ° C.
- Output of about 19 watts.
- Adjustable voltage of 3.4 volts (left) to 4.6 Volts (right, clockwise) applies to all 10 atomizers.
- Current limitation or short circuit indication at a current above 5 amperes.
- The device must be used on a stable and flat surface.
- The ventilation openings on the bottom and on the back must not be blocked (for example by soft surfaces or curtains).
- Keep a rear distance of 5 cm to the ventilation openings.

Operating condition of the atomizers

Recommended wire resistances and voltages

- Normal wire operation
Kanthal or NiCr wire
 $1,00\ \Omega \pm 0,1\ \Omega$ ($U=4,4$ Volt)
- Lack of liquid detection activated
Dicodes temperature wire NiFe30
 $0,5 - 0,6\ \Omega$ at room temperature ($U=4,0$ Volt)

RECOMMENDATION OF THE MANUFACTURER

We recommend the normal wire operation. The *lack-of-liquid-detection* mode requires special wire, precise coils and a higher workload.

Warranty

We grant a warranty of 6 months starting from date of purchase. The warranty expires immediately if the product is mishandled or manipulated.

The device contains several LEDs. The failure of a single LED is not a warranty case. Only the failure of two or more LEDs is a valid warranty.

If you have any difficulties, problems or questions please contact your dealer or the manufacturer.

The user manuals for the Taifun® LTB are available for download on the website **www.smokerstore.de** under the menu item Taifun® LTB.

Manufacturer's Address:

SmokerStore GmbH
Eisenwerkstraße 26
D-58332 Schwelm
Germany

Phone: +49(0)2336 935899-0

Fax: +49(0)2336 4744870

E-Mail: info@smokerstore.de

Preparations before first use

Saline solution

Give two drops of saline solution into the chamber. This will increase the electrical conductivity of leaked liquid. The saline solution is necessary for the correct function of the sensor.

After a while, a salt crust will form inside the chamber. As long as the salt crust remains visible, adding of further salt solution is not necessary.

Coil building

(see: Building of coils)

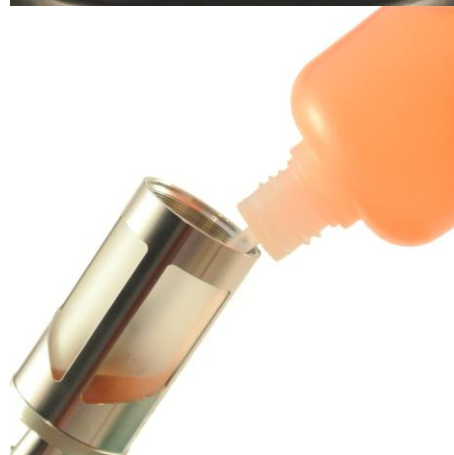
Filling

(see: Filling of the tank)

Insert shots

Put the acrylic shots carefully into the recesses provided for them above or below the atomizers.

The acrylic shot with the logo should be attached in the upper recess.



Starting the Taifun® LTB

Power on

The Taifun® LTB is switched on by the main switch (on the back side).

Then, the Taifun® LTB performs a self check.

LED Check 1

All 10 LED lights will briefly turn red.

LED Check 2

All 10 LED lights will briefly turn green.

Status display of functions

The LED Pos. 1-6 (from left to right) light up briefly and indicate the current status

(green = activated, red = deactivated)

Then the Taifun® LTB is ready for use.



Using of the Taifun® LTB

Start vaping process

Press and hold the button corresponding to the desired liquid.

The adjacent LED flashes green for the duration of the vaping process.

Preparation

For about 1 second air is pumped through the selected atomizer, without generating steam.

Generating steam

Now, steam is generated for a period of a maximum of 6 seconds. The steam comes out on the upper side of the atomizer and can then be inhaled.

End of vaping process

After 6 seconds, the Taifun® LTB interrupts the steam process. Then, air is pumped through the atomizer for a short time, in order to reduce the formation of condensation.

By re-pressing the button, the steaming process will start again.



Status display of the Taifun® LTB (during power on) in delivery status



- 1** Liquid detection (detects an leaking atomizer)
standard: green = activated
- 2** Lack of liquid detection (detects a dry wick)
standard: red = deactivated / normal wire mode is active
- 3** Antitheft / Alarm (optional function)
standard: red = deactivated
- 4** **Blue** lightning
standard: green = activated
- 5** **Green** lightning
standard: red = deactivated
- 6** **Red** lightning
standard: red = deactivated

Status display and error display of the Taifun® LTB (during use)

Status	Description
Single LED is off	No Atomizer detected or keylock is activated.

Troubleshooting

Screw in the atomizer or deactivate the keylock.
(press button 5 times)

Status	Description
Single LED is GREEN	Ready to use. Valid atomizer detected.

Troubleshooting

-

Status	Description
All LEDs are GREEN (changing)	Stand-By-Mode. After a few minutes the Taifun® LTB goes into the standby mode. The status indicator blinks green from left to right.

Troubleshooting

Press any key, to leave the stand-by-mode.

Status	Description
Single LED flashes GREEN	Button is pressed. Vaping is in progress.

Troubleshooting

-

Status display and error display of the Taifun® LTB (during use)

Status	Description
Single LED is RED	The electronics has detected an overload or a short circuit. The electric current is higher than the maximum of 5 A.
	Troubleshooting Change the atomizer or the coil. Reduce the power (on the back side). Further checking by pressing again.
Status	Description
Single LED flashes RED (once per second)	Lack of liquid during vaping detected. Only works with thermal wire (NiFe30).
	Troubleshooting Refill the tank with liquid. Then a reset is required (turn off, wait 5 sec., turn on).
Status	Description
Single LED flashes RED (twice per second)	Leaking atomizer detected.
	Troubleshooting Cleaning is required. (See: cleaning)
Status	Description
All LEDs flashing RED	Temperature protection, the Taifun® LTB is overheated.
	Troubleshooting Wait until the device has cooled down again and the display of LEDs is back to normal.

Temporary troubleshooting

In case of unexpected problems with the liquid detection (leaked atomizer) or the anti-theft protection (alarm), you can deactivate these functions of the Taifun® LTB temporarily and continue operating with the remaining atomizers, until completing troubleshooting steps.

However, this measure does not replace the actual troubleshooting. It only maintains the operation of Taifun® LTB upright.

Further functions of the Taifun® LTB

Turn on/off keylock

Press the button 5 times

Now you can remove the atomizer (for example to refill, for cleaning or to change the coil).

Adjusting the voltage

With the power switch on the back, the voltage can be adjusted (7 positions).

The lowest setting (left) is 3.4 volts, the maximum setting (right) is 4.6 volts.

The maximum current is 5 amps.

Liquid detection

It is required to give two drops of the salt solution into the connection chamber.

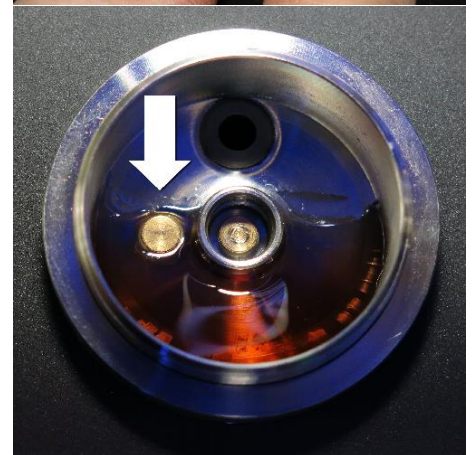
Now the sensor (see picture) can detect the liquid.

Antitheft

(optional function)

An alarm sounds, if the atomizer is removed.

To stop the alarm you have to screw the atomizer back on.



Turn functions of the Taifun® LTB on/off

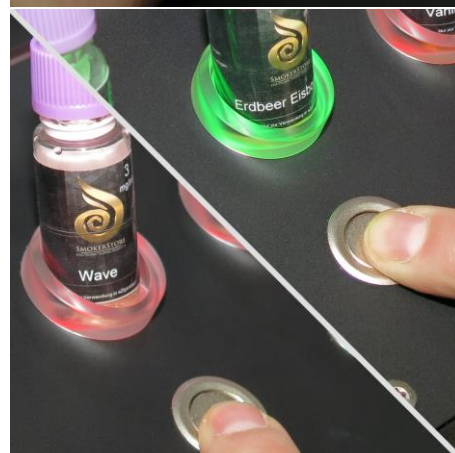
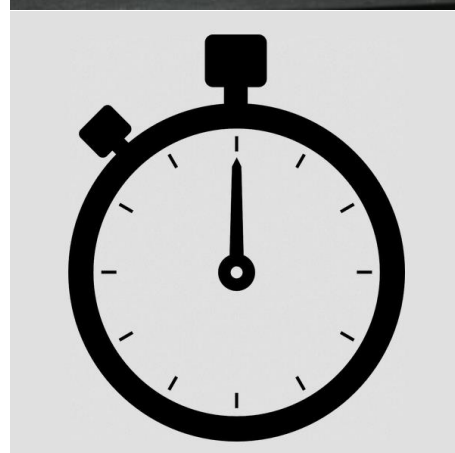
To activate/deactivate a function it is necessary to turn the Taifun® LTB off, by using the main switch on the back side. Then you have to turn on the Taifun® LTB again, while holding the the corresponding key (1-6).

IMPORTANT

Between turn off and on again, there should be a minimum of 5 sec. waiting time to clear the memory.

During switching, it is necessary to hold the corresponding key (1-6).

- If a function is active, it is deactivated by this operation (**GREEN** change to **RED**).
- If a function is deactivated, it is activated by this operation (**RED** change to **GREEN**).
- You can only activate or deactivate one function at once.



Example A: Switch to red lightning

In delivery status the lighting is turned to blue. To change it to red, these steps are necessary:

Step 1:

Turn off the Taifun® LTB by using the main switch on the back side.

Step 2:

Press the button #6 and keep it pressed.

Step 3:

With the other hand you turn the device back on.

Step 4:

It starts with the initial LED check 1 and LED check 2. Then the LEDs pos. 1-6 (from left to right) light up briefly and indicate the current status. Keep button #6 pressed.

Step 5:

The LED #4 and #5 will light up red now (disabled).

The LED #6 lights up green (activated).

The red light is now activated.

Step 6:

Release button #6 now.

The lightning is switched to red.



Example B: Turn on lack-of-liquid detection

By default, the lack-of-liquid detection is turned off and normal wire mode is active. To use the lack-of-liquid detection, you need coils made of thermal wire (NiFe30).

Step 1:

Turn off the Taifun® LTB by using the main switch on the back side.

Step 2:

Press the button #2 and keep it pressed.

Step 3:

With the other hand you turn the device back on.

Step 4:

It starts with the initial LED check 1 and LED check 2. Then the LEDs pos. 1-6 (from left to right) light up briefly and indicate the current status. Keep button #2 pressed.

Step 5:

The LED #2 will light up green now.

As long as you keep the button pressed, the status will be displayed.

Step 6:

After releasing the button, the coil will be tested.

If one of the LEDs (1-9) lights up green, the coil is accepted.

If the LED #10 lights up red, the coil is not accepted and the function will not be activated.



Cleaning of the Taifun® LTB (in case of leaking atomizer)

IMPORTANT:

If the anti-theft function is activated, it has to be deactivated for the affected atomizer, before removal.



Step 1: The sealing ring is unscrewed counterclockwise.



Step 2: The sealing ring is then pulled off upwards.



Step 3: Now, the sealing ring can be removed.



Step 4: Unscrew the atomizer.



Step 5: Now you should check if liquid is in the connection chamber.



Step 6: If necessary remove the liquid, using a cloth.



Step 7: Clean the sensor completely with a water-soaked brush and then pat dry again. The chamber should now be clean again.



Step 8: After cleaning it may be necessary to put saline solution into the chamber, again. Now, the atomizer can be screwed on.



Step 9: Screw the sealing ring, when finished.

Cleaning of the Taifun® LTB (Housing)

Clean the acrylic-shots and the cover plate of Taifun® LTB with a soft, lightly moistened cloth.

Clean the housing of Taifun® LTB with a soft, dry cloth.

Do not use abrasive sponges, scouring agents, acid-, solution- or fatty cleaners or sharp objects for cleaning.

For stubborn dirt, a lightly moistened cloth may be used with warm water and a mild household cleaner or glass cleaner. Afterwards please always wipe dry.

Liquid drops on the surface should be wiped off immediately with a dry cloth.

The surfaces should not remain continuously wet or moist for a longer period.

Transport of the Taifun® LTB

Turn off and remove power cord

Before transporting the Taifun® LTB must be turned off and the power cord must be unplugged and removed.



Remove the atomizers

Unscrew the sealing rings and remove the atomizers.

The atomizers must not remain on the Taifun® LTB during transport. If you don't remove the atomizers, it is possible that liquid will enter the air pipe.



Visual controll of the chambers

Once the atomizers are removed, you should inspect the chambers. If there is leaked liquid in one of the chambers, it has to be removed and the chamber has to be cleaned before transport.

(See: cleaning)



Remove acrylic-shots

Remove the acrylic shots and wrap them into a soft cloth or blanket to avoid scratching.



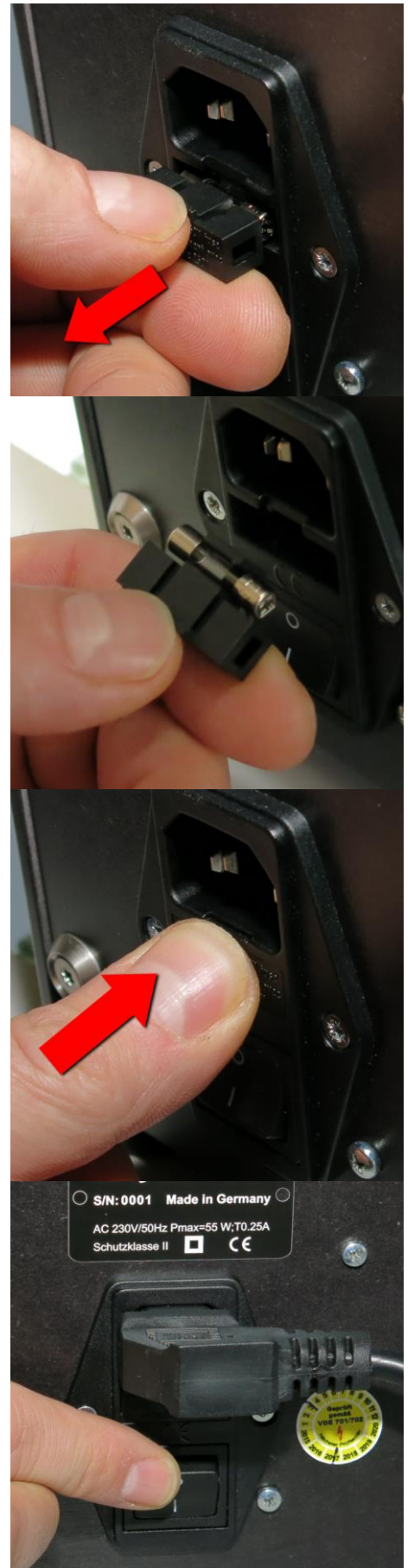
Replacing the fuse of the Taifun® LTB

Disconnect the Taifun® LTB from the power source and pull the fuse on the rear out.

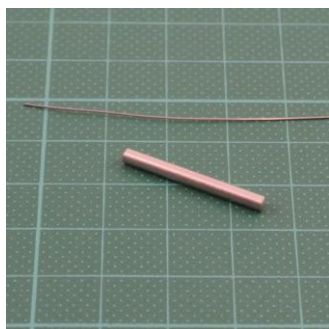
Now the fuse can be replaced.

Insert the new fuse.

Then the Taifun® LTB can be connected to the power cable and turned on again.



Coil building



Pic 1: You need a winding tool with a diameter of 2.5 mm and wire.



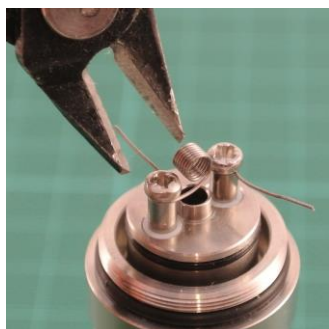
Pic 2: Create a coil. The wire ends should point in the opposite direction.



Pic 3: Install the coil as centrally as possible between the two poles.



Pic 4: Tighten carefully with a suitable screwdriver.



Pic 5: Remove the winding tool and cut off the wire ends.



Pic 6: The coil should be located centrally between the poles.



Pic 7: Check the resistance using an appropriate meter (e.g. Taifun® Omega).



Pic 8: Attach the chamber sleeve from the top



Pic 9: Now push the chamber sleeve down, until it clicks into place.



Pic 10: Guide the cotton through the coil..



Pic 11: Pull the chamber sleeve up, until it clicks again into place.



Pic 12: Arrange the cotton in the chamber (S-shape).



Pic 13: The cotton should now fit the chamber well. Now, you can pre-moisten the cotton with a suitable liquid.



Pic 14: Screw the chamber cap onto the chamber sleeve and tighten carefully.



Pic 15: Now you can fill the tank.



Pic 16: After screwing the tank onto the atomizer, it is ready for use.

**We recommend the normal wire operation with NiCr or kanthal-wire.
The wire thickness should be 0.3 mm. We also recommend *Cotton Bacon*.**

(Re-)filling of the atomizers

Activate key-lock / remove atomizer

Before filling, the keylock of the selected atomizer has to be activated.

If you want to fill more atomizers at once, it is recommended to turn the Taifun® LTB off.

You must unscrew the entire atomizer to refill it.

(Re-)Filling

Hold the atomizer upside down and unscrew the tank. Now the selected liquid can be filled into the tank. Screw the tank back on, while still holding the atomizer upside down.

IMPORTANT:

Do not overfill. The capacity of each tank is about 5 ml.

Visual controll of the chambers

Before you screw the atomizer back on the device, you should inspect the chambers. If there is leaked liquid in the chamber, it has to be removed and the chamber has to be cleaned.

(See: cleaning)

IMPORTANT:

If leaked liquid enters the air pipe, a cleaning by the manufacturer will become necessary.

Inserting the atomizers / deactivate key-lock

If the chamber is clean, the atomizer can be screwed onto the device.

After the key lock is deactivated or the Taifun® LTB is turned back on, the steam process can be started as usual.





**SMOKERSTORE
ELECTRONIC VAPING PRODUCTS**

SmokerStore GmbH

www.smokerstore.de